

HP® CP4005™ Series Chip Guide

Installation Instructions

OEM Cartridge Numbers:

CB400A – Black
 CB401A – Cyan
 CB402A – Yellow
 CB403A – Magenta

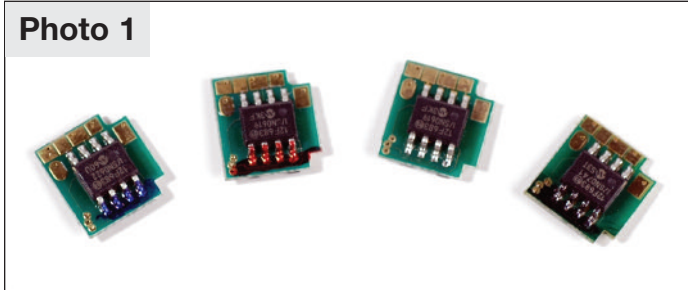
Tools/Supplies Needed:

Fine Blade, Tweezers or
 Needle-nose Pliers

Machine Models:

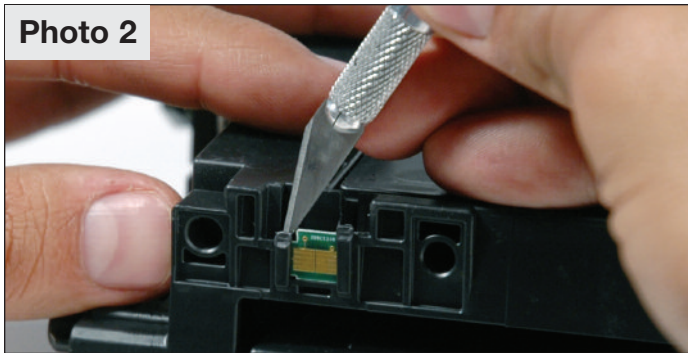
HPCP4005n, HPCP4005dn

Photo 1



HP®CP4005™ Series Chips

Photo 2

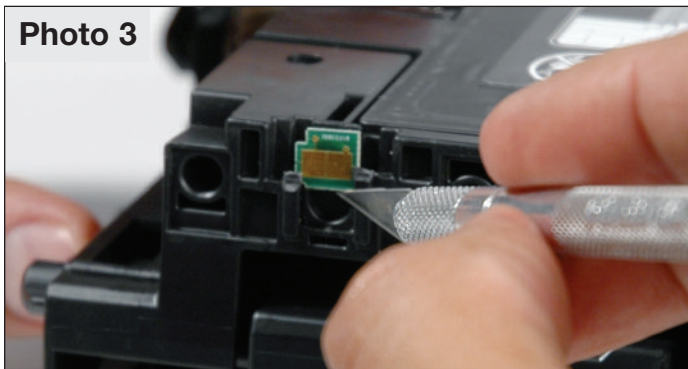


Step 1

Use a fine blade to cut along the top edge of the chip to free the OEM chip from the chip housing (see photo 2).

NOTE: Prying the chip loose by force may damage the chip housing.

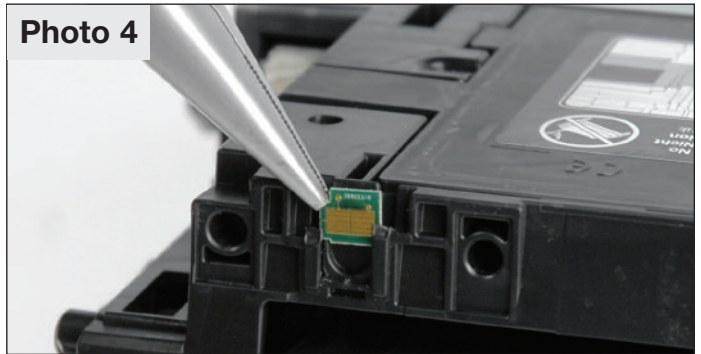
Photo 3



Step 2

Use a fine blade to lift the chip from the bottom of the housing (see photo 3).

Photo 4



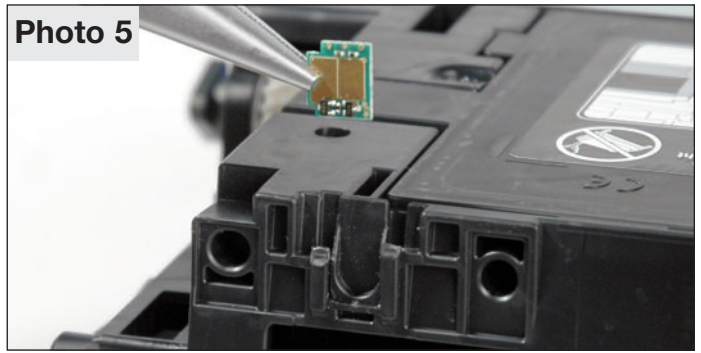
Step 3

Carefully remove the OEM chip using a pair of tweezers or needle-nose pliers to lift the chip clear of the housing (see photo 4).

Step 4

Clean the chip housing of any plastic shavings or debris.

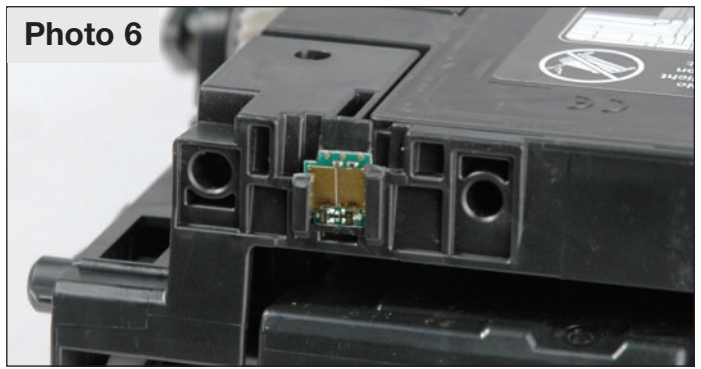
Photo 5



Step 5

Position the replacement chip with the notched corner on the top left of the housing (see photo 5), and insert the replacement chip.

Photo 6



Step 5

Firmly seat the new chip flush along the bottom of the chip housing to ensure proper contact (see photo 6).