

Samsung® ML-2150™ Compatible Chip

**FUTURE
GRAPHICS**

www.futuregraphicsllc.com
info@futuregraphicsllc.com

REORDER NO.	QTY.
ML2150CHIP	1

Also for: ML-2151, ML-2152

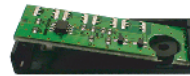
STEP 1:

Remove OEM chip: Remove the single screw holding chip case in place



STEP 2:

Remove chip from case: Pull case edge out to release left side of chip, then slide out the opposite side



STEP 3:

Insert new chip: Place right side of chip in first, then snap the opposite side in place



STEP 4:

Re-attach chip case to cartridge and test

All brand names and trademarks are properties of their respective owners and are used here for descriptive purposes only.

 Cut Here for chip

ML2150CHIP_LBL 8/04