

SAMSUNG CLP-600/650 COMPATIBLE REPLACEMENT CHIP

Installation Instructions

Step 1

Locate the OEM chip mounted in the back of the cartridge. (see photo 1)

Step 2

To remove OEM chip, gently push the chip out of the holding area while lifting the plastic bar. (see photo 2)

Step 3

To install compatible replacement chip, gently push the chip into the holding area while lifting the plastic bar. (see photo 3)

Photo 1

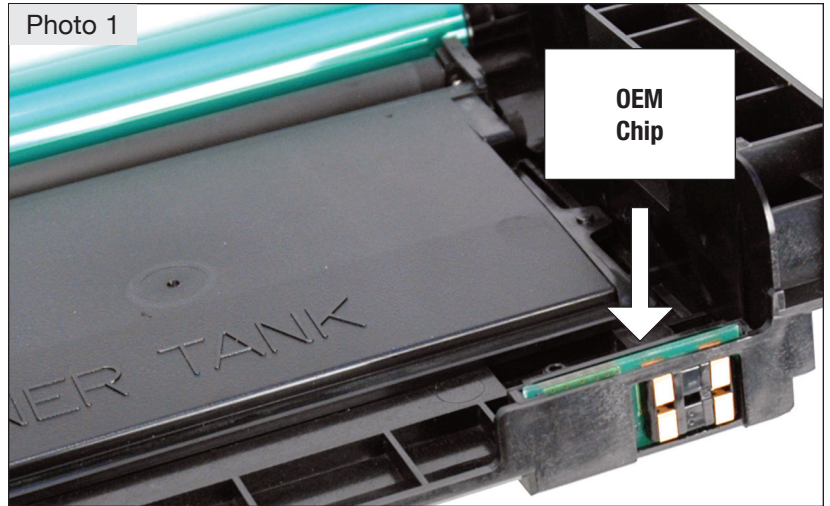


Photo 2

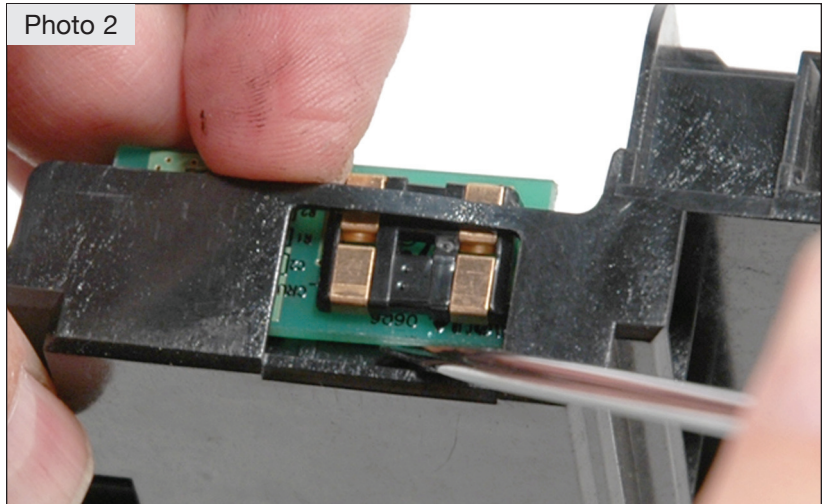
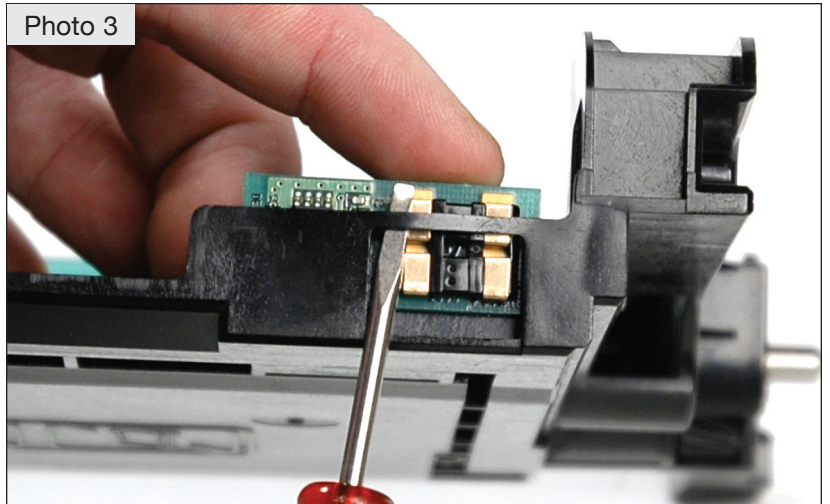


Photo 3



Future Graphics (FG) is a distributor of compatible replacement parts and products for imaging equipment. None of FG's products are genuine OEM replacement parts and no affiliation or sponsorship is to be implied between FG and any OEM.